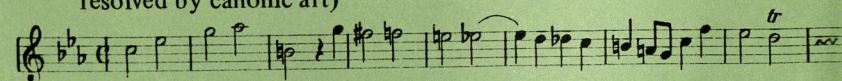


Concerto in G major RV 102 Vivaldi  
 Trio Sonata in D minor Op. 1 No. 12 RV 63 Vivaldi  
 19 Variations on 'La Folia'  
 Concerto in D major RV 89 Vivaldi

**INTERVAL**

Ein Musicalisches Opfer BWV 1079 J.S. Bach  
 (A Musical Offering to Frederick the Great in 1747)  
 Regis Iussu Cantio Et Reliqua Canonica Arte Resoluta  
 (By the King's command, the tune and other matter  
 resolved by canonic art)



1. Ricercar a 3 voci
2. Canon perpetuus (Perpetual canon)
3. Canones diversi super thema regium (Diverse canons on the royal theme)
  - i. Canon a 2.
  - ii. Canon a 2. Violini in unisono.
  - iii. Canon a 2. Per motum contrarium (By contrary motion)
  - iv. Canon a 2. Per augmentationem, contrario motu (By augmentation and contrary motion)  
 Notulis crescentibus crescat Fortuna Regis  
 (Let the King's fortune increase as does the length of the notes)
  - v. Canon a 2. Per tonos.  
 Ascendente modulatione ascendat Gloria Regis  
 (May the Glory of the King rise with the rising modulations)
4. Fuga canonica in epidiapente (Canonic fugue at the fifth)
5. Ricercar a 6 voci.
6. Canon a 2. Quaerendo invenietis (Seek and you will find)
7. Canon a 4.
8. Sonata a tre. Flauto, violino e basso.  
 Largo - Allegro - Andante - Allegro
9. Canon perpetuus a 3. Flauto, violino e basso.

*This concert is presented in association with the Goethe-Institut*

*Next concert in the Reid Concert Hall*

Thursday 16th February 7.30

**REID MEMORIAL CONCERT  
 by STUDENTS OF THE MUSIC FACULTY**

*Please note the change of date from Thursday 9 February*

*Printed by the University of Edinburgh.*

EDINBURGH  
 UNIVERSITY  
 CONCERTS

1983-84

**ROBERT SPENCER**

'The Elizabethan Lute: A talk illustrated on a lute of 1584 and with original manuscripts and song-books of John Dowland'.

St. Cecilia's Hall, Thursday 23rd February 1984

Admission by Programme price £1.00  
 (Concessions 50p)

14

17



**ROBERT SPENCER** *lutenist and singer*

ROBERT SPENCER studied at the Guildhall and Dartington schools of music and joined the Julian Bream Consort in 1961. Since then he has worked with many distinguished musicians including Dame Janet Baker, Alfred Deller, David Munrow and Raymond Leppard. He has toured frequently in Europe and America with the Bream Consort and, since 1972, with the Deller Consort. He became the first resident theatre lutenist since the 17th-century when he joined the Royal Shakespeare Company at Stratford-on-Avon in 1961 and has devised and shared programmes of readings and music with Dame Peggy Ashcroft, Judi Dench and many others.

He is an acknowledged authority on the history of the lute and has contributed articles to both *Early Music* and the *New Grove's Dictionary*. He teaches at the Royal Academy of Music, at the Deller summer schools in France and Holland and at the Britten-Pears School in Aldeburgh. He plays a lute made in 1584 by Wendelio Venere of Padua which was restored in 1765 and again in 1977.

*Forthcoming concerts*

Thursday 1 March 7.30 pm REID CONCERT HALL  
EDINBURGH UNIVERSITY MADRIGAL GROUP  
MICHAEL TURNBULL *director*

Haydn (Miss Cellensis), Isaac (Motets),  
Mozart (Church Sonatas K278 & K336 and  
Ave Verum Corpus K618)

Tuesday 6 March 1.10 pm REID CONCERT HALL

STEVEN ISSERLIS *cello*  
PETER EVANS *piano*

Liszt (Elegie No. 1), Poulenc (Sonata),  
Macmillan (Study on two planes) and  
3 Lennon/McCartney arrangements.

Thursday 15 March 7.30 pm ST. CECILIA'S HALL  
SCOTTISH EARLY MUSIC CONSORT

'When Birds do Sing ...'

EDINBURGH  
UNIVERSITY  
CONCERTS

1983-84

EDINBURGH UNIVERSITY MADRIGAL GROUP

MICHAEL TURNBULL *director*

KATIE WYLIE *soprano*  
JO LAMING *mezzo-soprano*  
SAMUEL KING *tenor*  
LAWRENCE HAIGH *baritone*

CHRISTOPHER BELL *organ*

Reid Concert Hall, Thursday 1 March 1984

Admission by programme price £1.00  
(Concessions 50p)